

THE UNITED REPUBLIC OF TANZANIA

MINISTRY OF EDUCATION SCIENCE AND TECHNOLOGY

IN COLLABORATIONS WITH

PRESIDENT'S OFFICE, REGIONAL ADMINISTRATION AND LOCAL GOVERNMENT

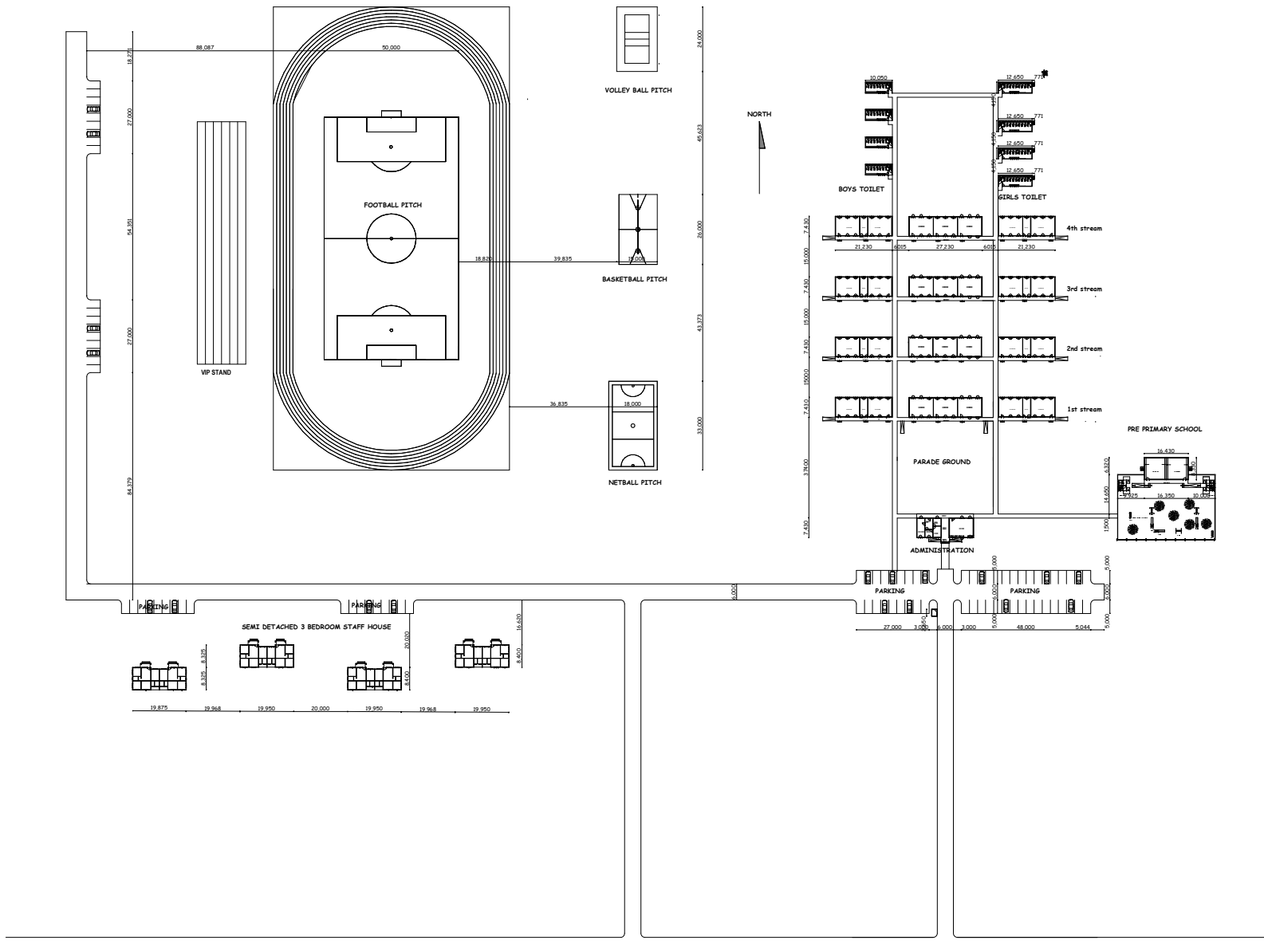
PROVISION OF PHYSICAL FACILITIES IN PRIMARY SCHOOLS

Ministry of Education, Science and Technology
Government City-Mtumba,
Afya Street,
P.O. Box 10,
40479 DODOMA

President's Office, Regional Administration
and Local Government.
Government City-Mtumba,
TAMISEMI Street,
P.O. Box 1923,
41185 DODOMA

JANUARY, 2023

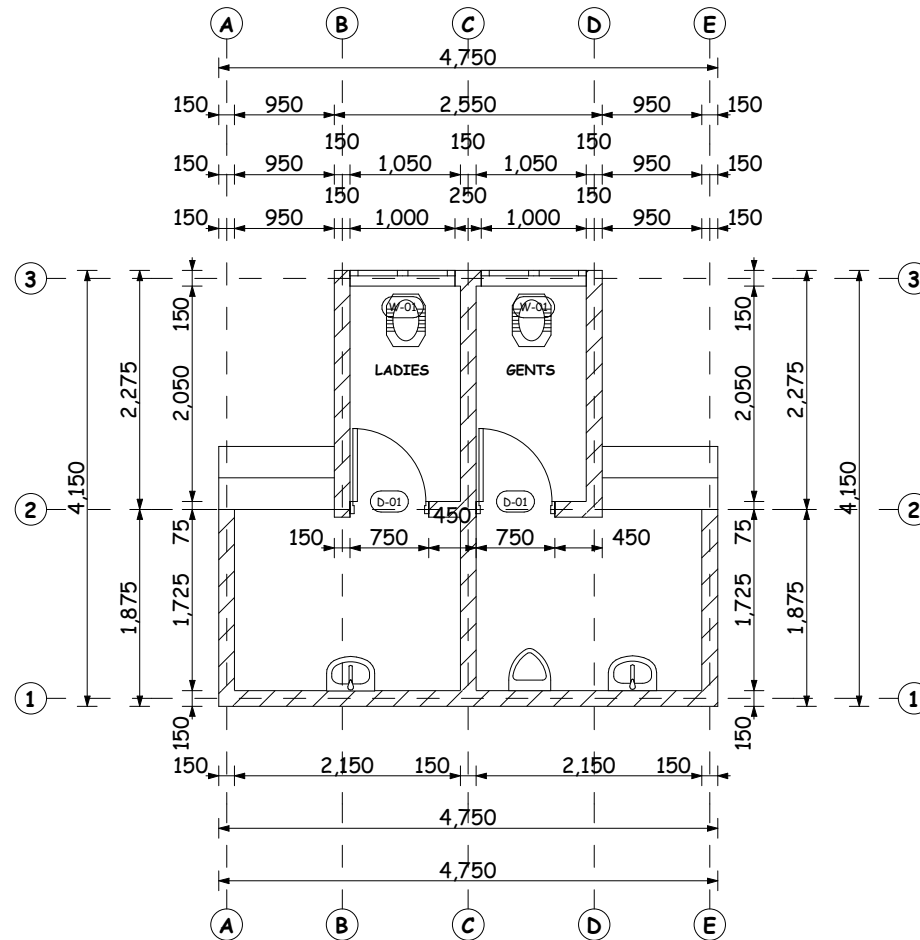
ARCHITECTURAL DRAWINGS

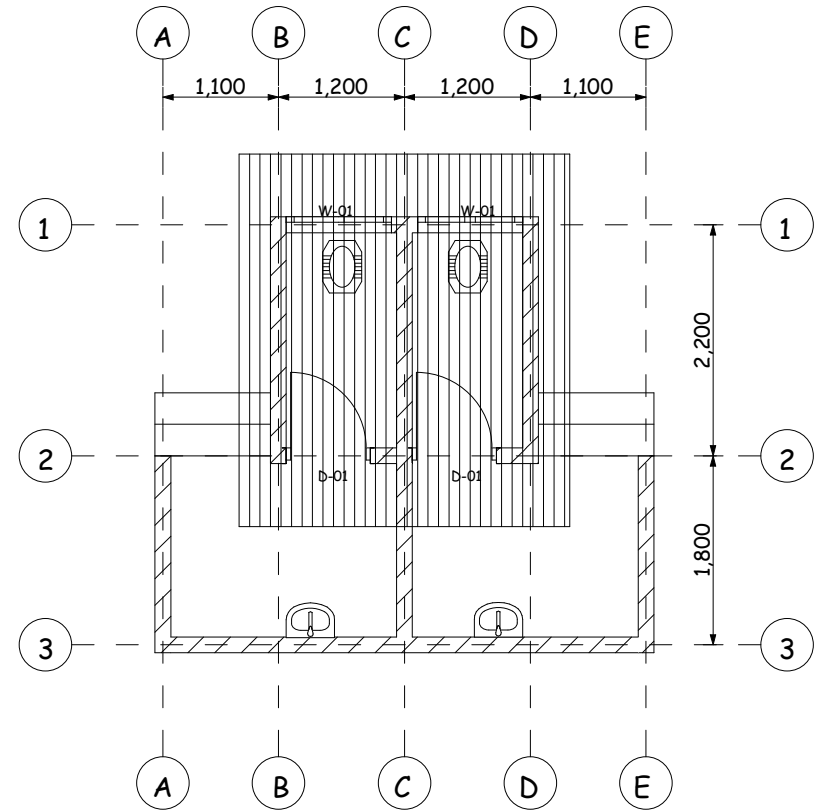
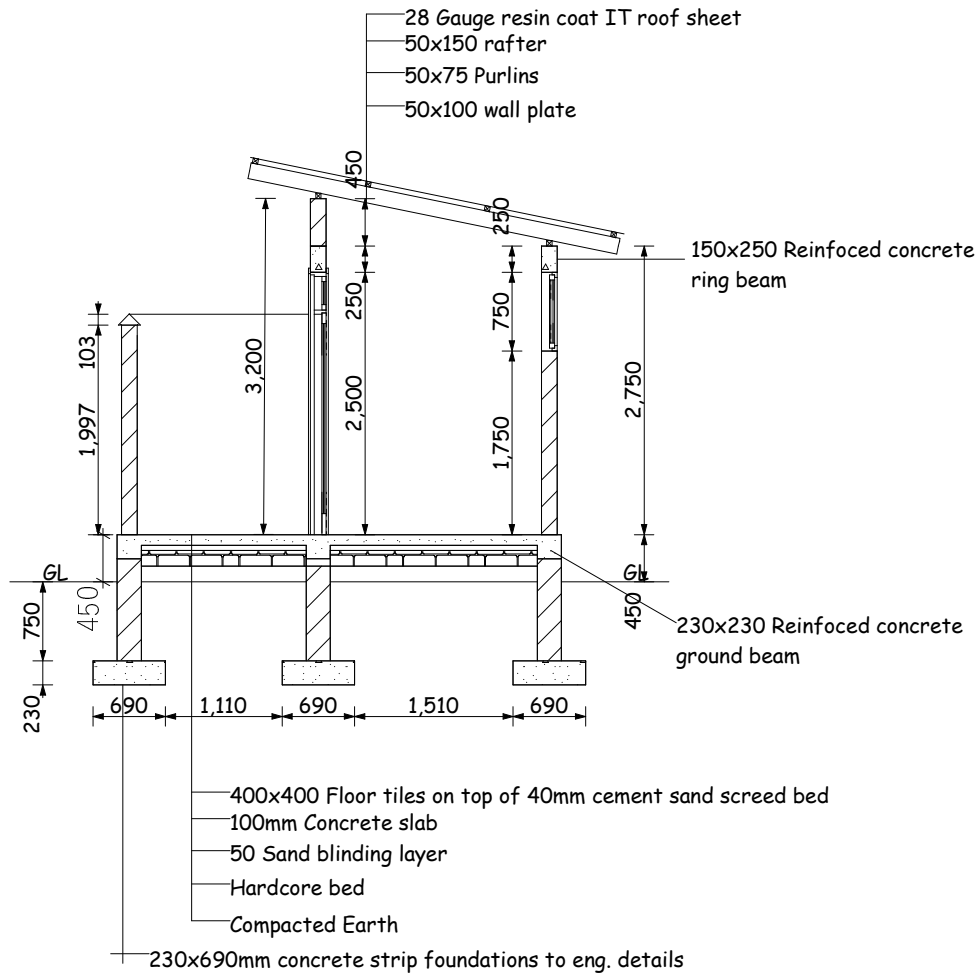


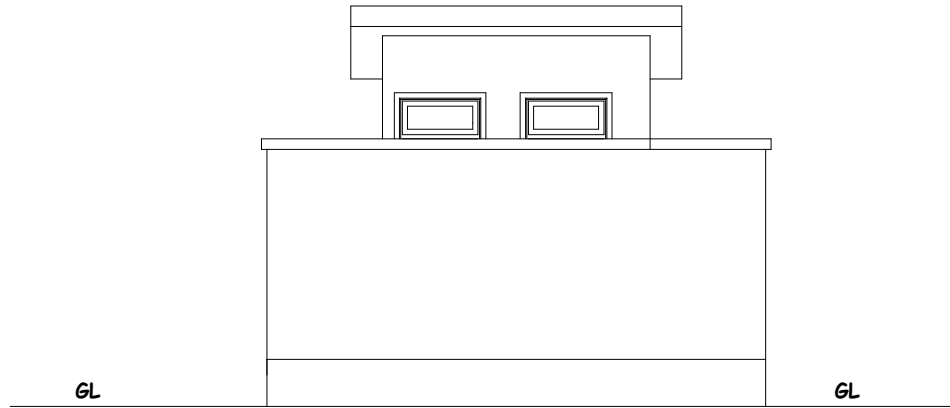
**TOILET BLOCKS - PIPED WATER AREA FOR TEACHERS
IN ADMINISTRATION BLOCK**

WINDOW SCHEDULE		
WINDOW TYPE	HEIGHT X WIDTH	QUANTITY
W-01	750X1000	02

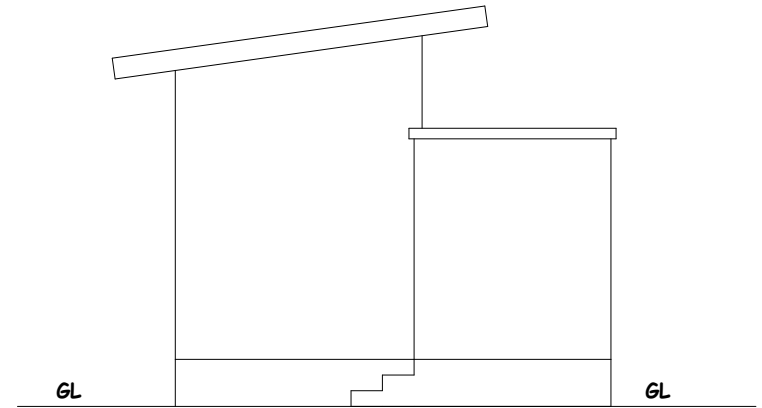
DOOR SCHEDULE		
DOOR TYPE	HEIGHT X WIDTH	QUANTITY
D-01	2000X750	02



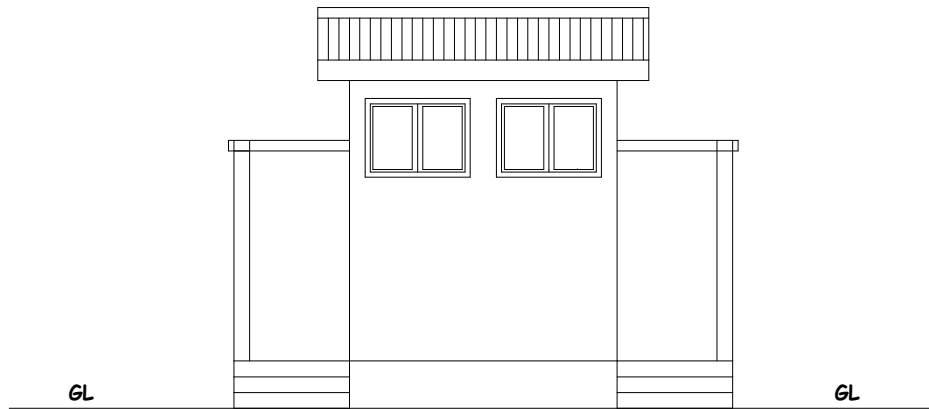




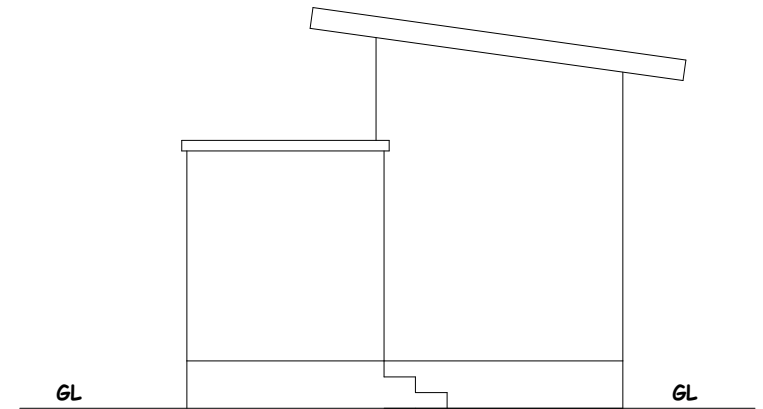
FRONT ELEVATION



SIDE ELEVATION

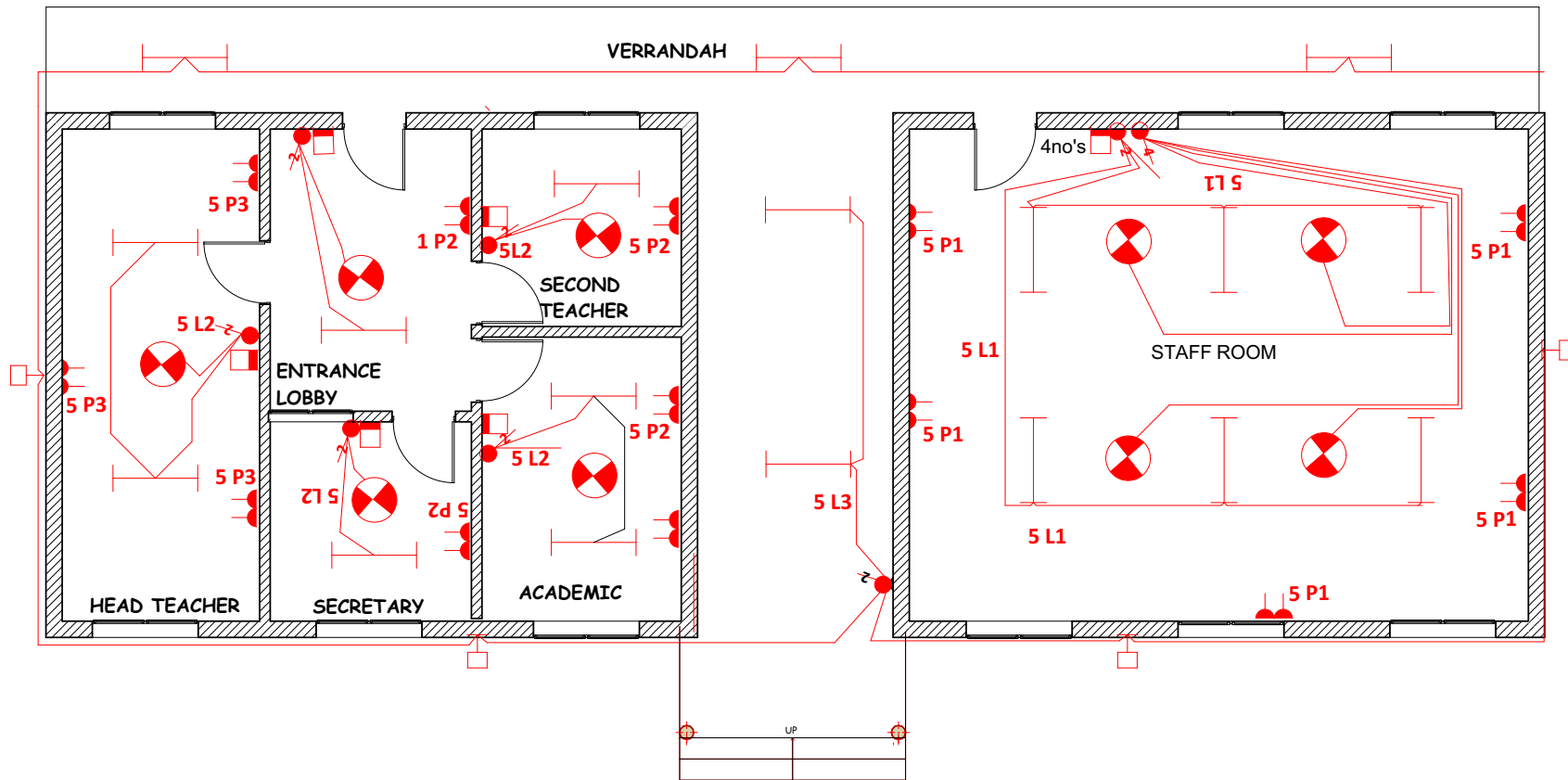


REAR ELEVATION



SIDE ELEVATION

ELECTRICAL DRAWINGS



REVISED 1

MINISTRY OF EDUCATION, SCIENCE AND TECHNOLOGY
IN COLLABORATION WITH

PRESIDENT'S OFFICE REGIONAL ADMINISTRATION AND
LOCAL GOVERNMENT

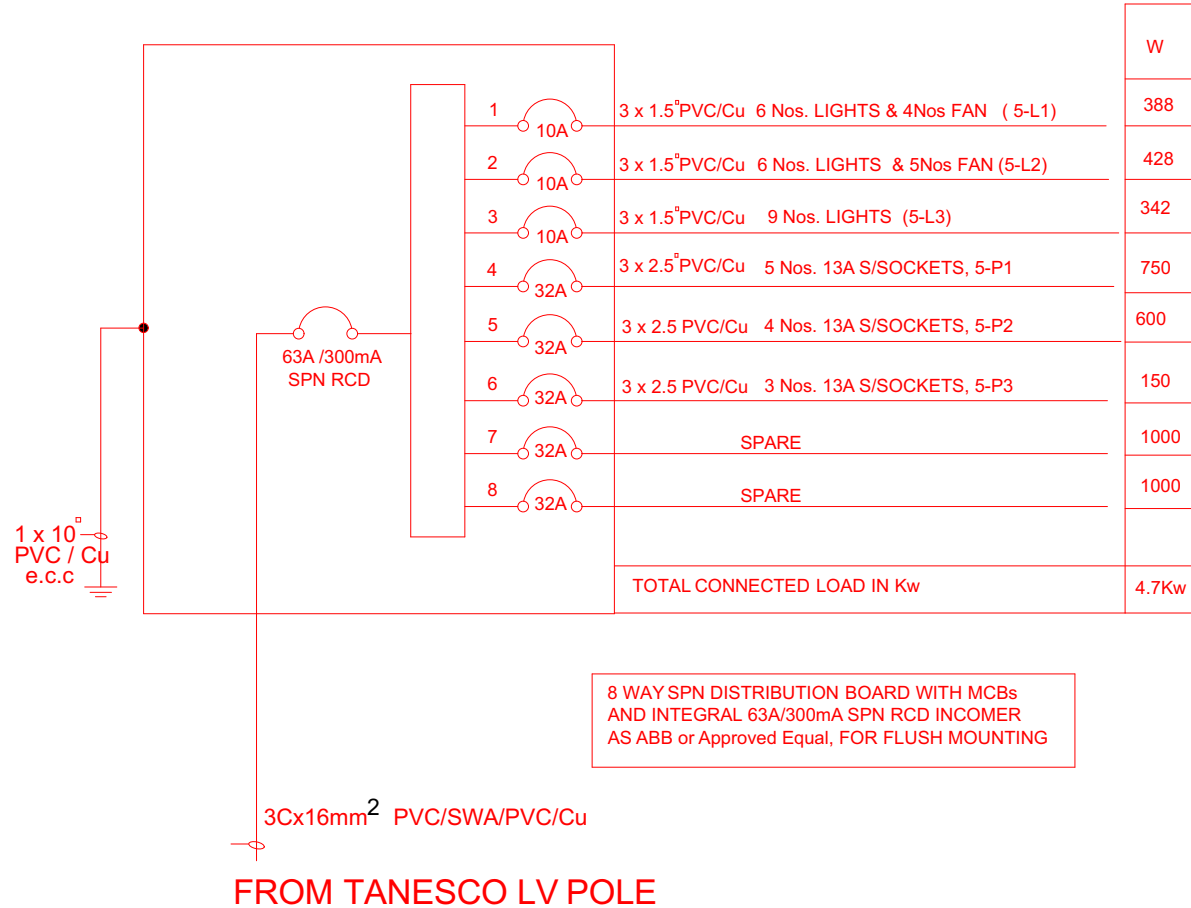
PROVISION OF PHYSICAL FACILITIES IN PRIMARY SCHOOLS

DRAWING TITLE:
PROPOSED ADMINISTRATION BLOCK -RURAL TYPE

FLOOR PLAN ELECTRICAL LIGHTING& POWER
DRAWING NO: P/ELECT/05



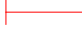










Date	December 2022
Drawn by	EEC
Checked by	EEC
Scale	NTS

ADMINSTRATION BLOCK RURAL DISTRIBUTION BOARD (DB-5)



REVISED 1

KEY TO SYMBOLS

SYMBOL	DESCRIPTION	MOUNTING HEIGHT
	Distribution Board with integral RCD	2000 mm AFFL
	Bulkhead light Fitting	Wall Mounted
	4FT Single Electronic Start Fluorecent Light	On Ceiling
	Ceiling Fan	On Ceiling
	Fan Regulator	1500 mm AFFL
	1 gang 1way Switch	1500 mm AFFL
	1 gang 2way Switch	1500 mm AFFL
	2 gang 2way Switch	1500 mm AFFL
	3 gang 1way Switch	
	2 gang 1way Switch	1500 mm AFFL
	4 gang 1way Switch	1500 mm AFFL
	Twin Switch Socket	450 mm AFFL
	Ceiling light complete with energy saver 11w	on level

REVISED 1

MINISTRY OF EDUCATION, SCIENCE AND TECHNOLOGY
 IN COLLABORATION WITH
 PRESIDENT'S OFFICE REGIONAL ADMINISTRATION AND
 LOCAL GOVERNMENT

PROVISION OF PHYSICAL FACILITIES IN PRIMARY SCHOOLS

DRAWING TITLE:
 PROPOSED ADMINISTRATION BLOCK -RURAL TYPE
LEGEND
 DRAWING NO: P/3L3CT/05

Date	December 2022
Drawn by	EEC
Checked by	EEC
Scale	NTS